



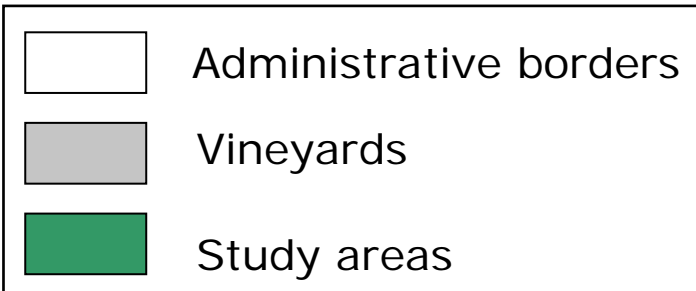
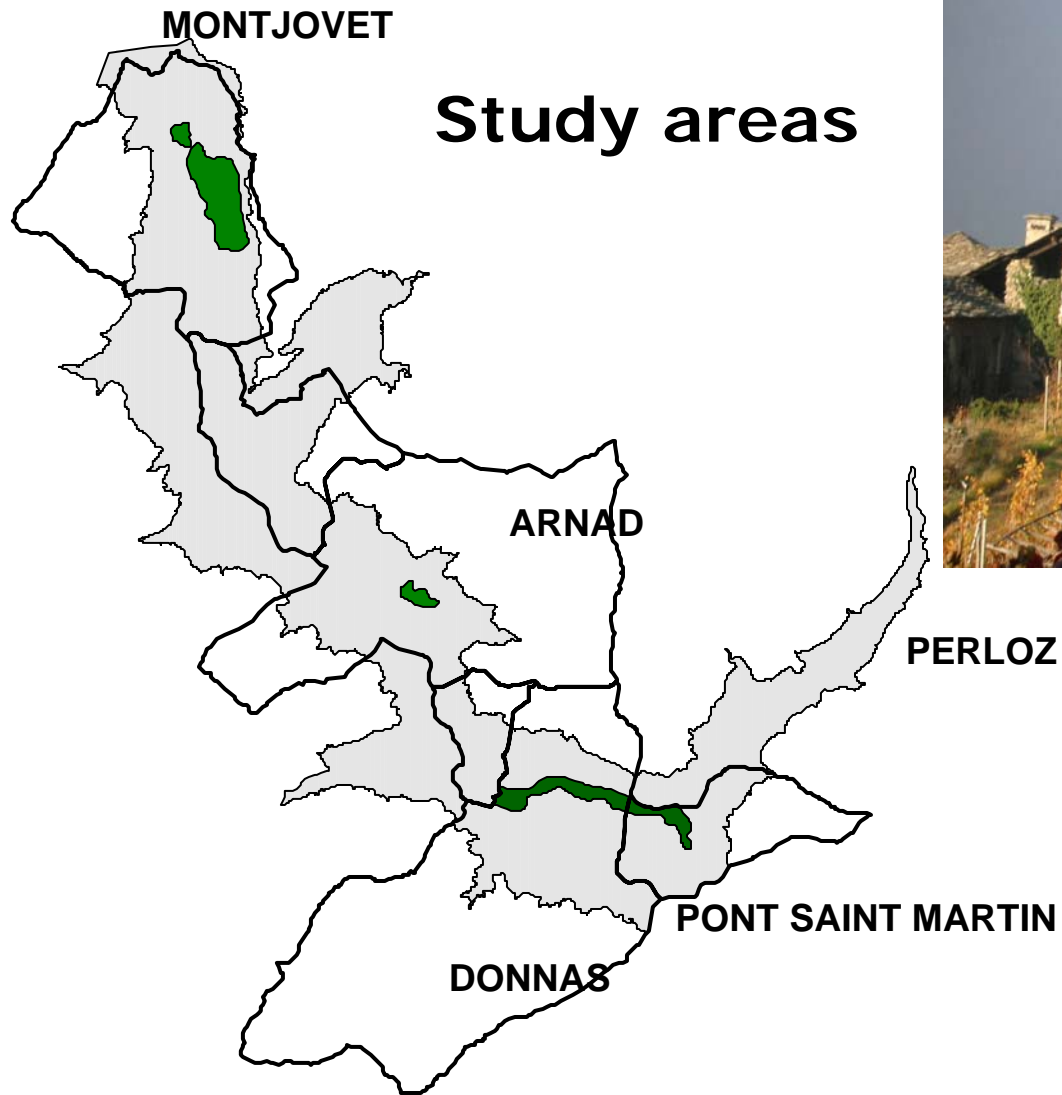
Terraced areas in the Alpine environment (Vallée d'Aoste – NW Italy): an anthropogenic landscape



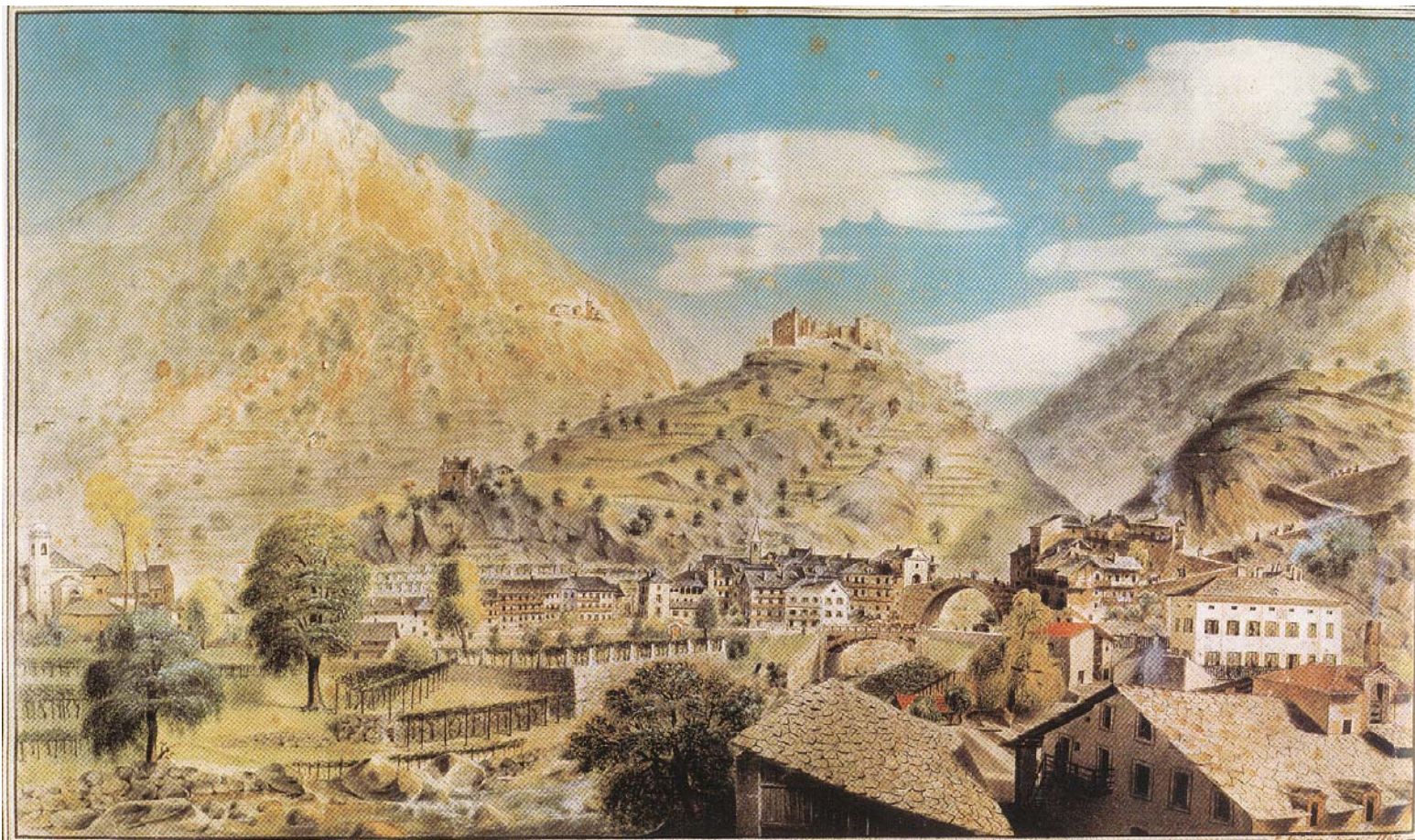
Regione Autonoma Valle d'Aosta
Région Autonome Vallée d'Aoste
Assessorato Agricoltura e Risorse Naturali



Dipartimento di Economia ed Ingegneria
Agraria, Forestale ed Ambientale
Sezione Topografia e Costruzioni



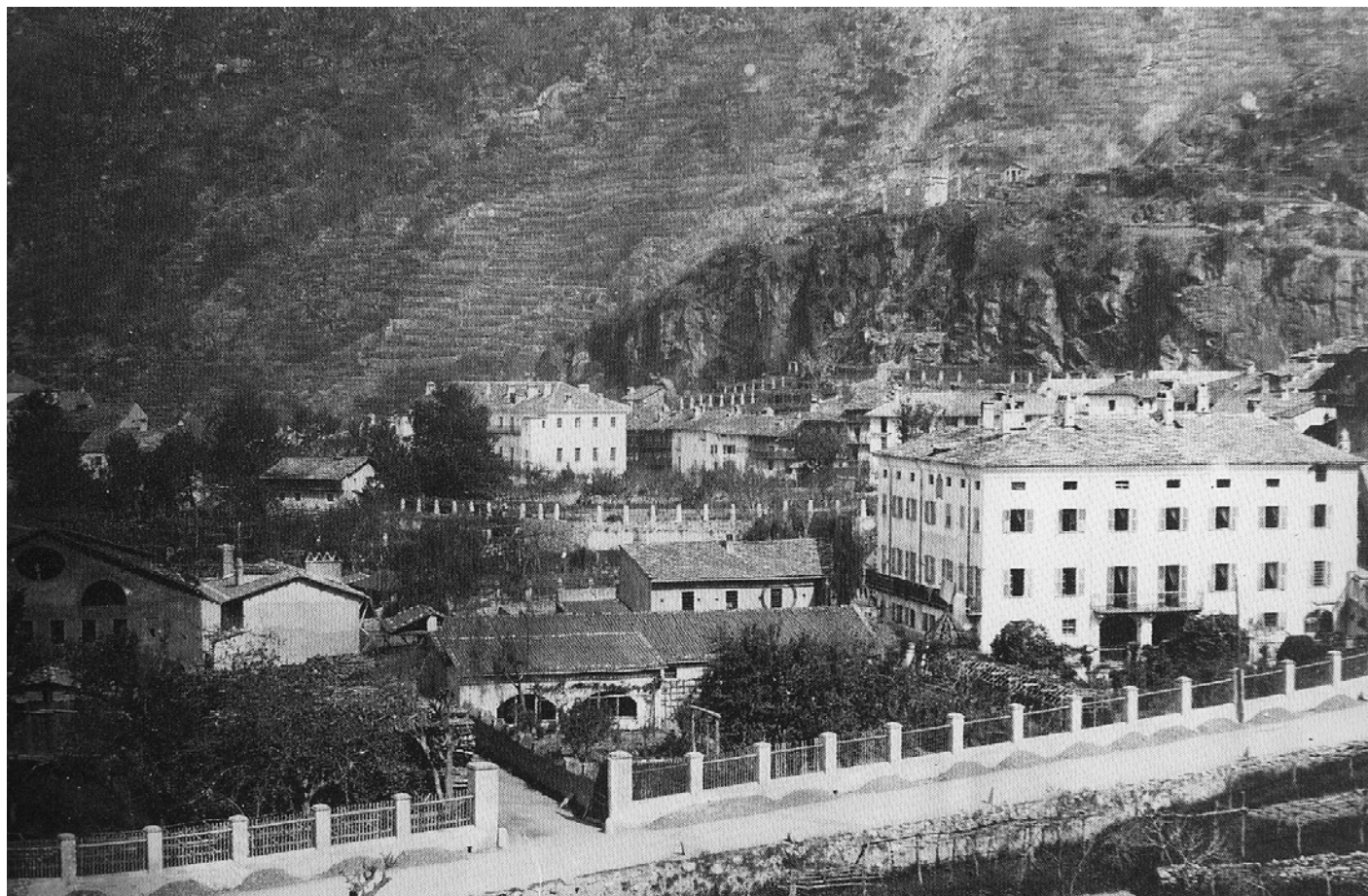
PONT SAINT MARTIN - DONNAS VINEYARD HISTORICAL TERRACED LANDSCAPE



Late 19th century



PONT SAINT MARTIN - DONNAS VINEYARD HISTORICAL TERRACED LANDSCAPE



Late 19th century



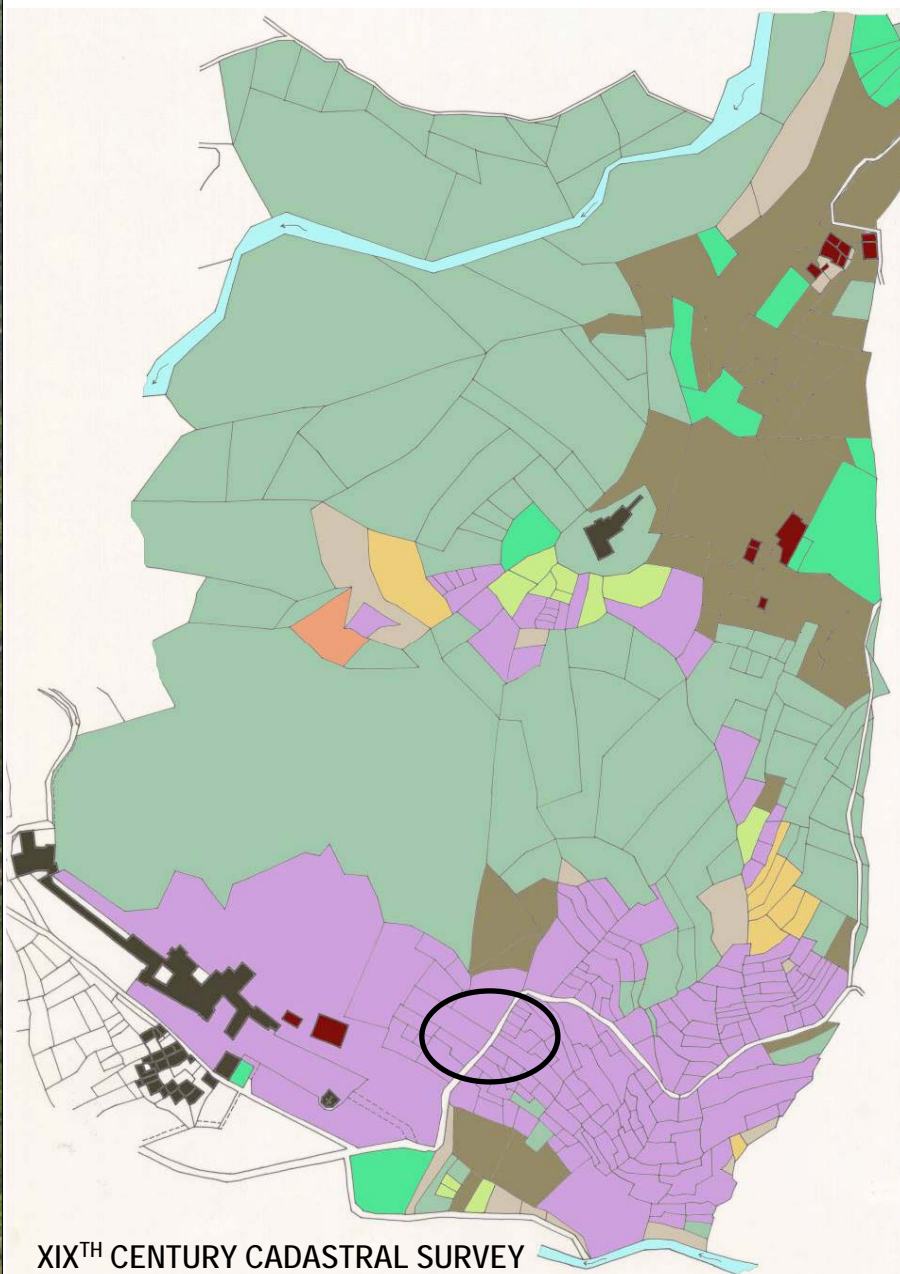


DIFFERENT TYPOLOGIES OF TERRACE WALLS



ALPTER: Terraced landscapes of the alpine arc

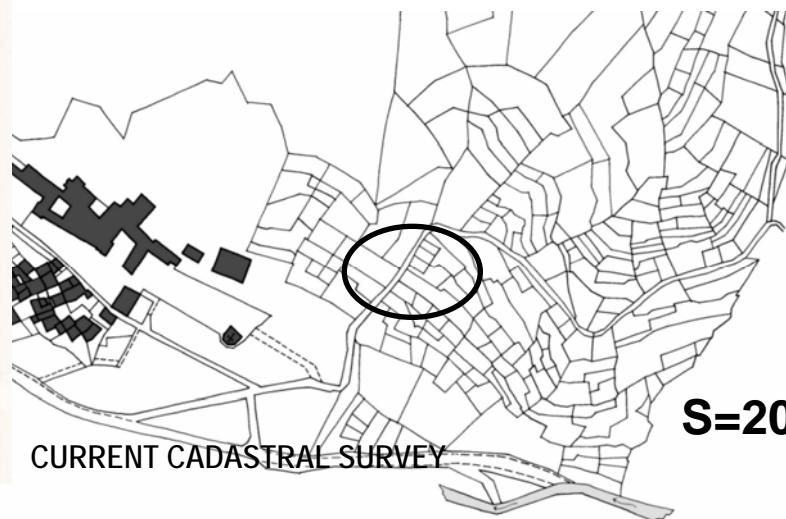
Project co-funded by the European Union



ARNAD MUNICIPALITY – LAND USE DATING 1896
historical cadastral survey – paper XXXI
(original graphical scale 1:1.000)



Vineyard landscape still maintains its original shape (historical land fragmentation - same owners)



S=200 mq

XIXTH CENTURY CADASTRAL SURVEY

CURRENT CADASTRAL SURVEY



**PEDOLOGICAL SURVEYS
SOIL CHEMICAL ANALYSIS**



**PEDOLOGICAL AND CHEMICAL
SOIL PROPERTIES**

**EVALUATION OF
SOIL PRODUCTIVE VOCATION**





ADI



ARNAD STUDY SITE

ARNAD I: 13 years old vineyards (espalier shaped)

ARNAD II: 12 years old vineyards (pergola shaped)

ARNAD III: abandoned (30-35 years)



PERGOLA-SHAPED

ARNAD II

12 years old vineyards

Technic Escalic Cambisol

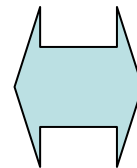


Percentage of skeleton (fraction larger than 2 mm), pH, available P, total C and total N of the vineyard soil

Site	Horizons	Depth	Skeleton	pH	Available P	C tot	N tot
ARNAD II		cm	% by weight		mg kg ⁻¹	g kg ⁻¹	g kg ⁻¹
	Ap	0-2	21.4	7.1	25	20.1	1.5
	Bw1	2-17	23.6	7.2	26	9.4	0.7
	Bw2	17-33	23.6	7.4	23	10.5	0.9
	Bw3	33-51	15.3	7.8	15	8.0	0.8
	Bw4	51-81	6.3	8.3	14	6.6	0.6
	Bw5	81-100	8.3	8.4	13	4.8	1.1
	BC	100-110+	20.3	8.1	7	5.0	2.1



Preserving the terraced landscapes of the Alpine Arc means to preserve also these specific soil characteristics.





Vth International Congress of the European Society for Soil Conservation
"Changing Soils in a Changing World: the Soils of Tomorrow"
Palermo, 25-30 July 2007

Terraced vineyard in Alpine environment (Vallée d'Aoste – NW Italy): an anthropogenic landscape

Freppaz M., Agnelli A., Drusi B., Stanchi S., Galliani C., Revel Chion V., Zanini E.

michele.freppaz@unito.it

www.Insa.unito.it

